

Martha Jolicoeur Helps Make Wellington Home For Horses And Humans Alike

Story by Lindsay Brock • Photos by Erin Gilmore

It is no secret that Wellington is a winter haven for horses and humans alike. For many seasonal residents, Wellington has become much more than simply an escape from the cold. Offering non-stop horse shows in the sun, Wellington has become home for many equestrian athletes and their four-legged partners.

The annual equestrian pilgrimage south has spurred a high demand for farms and homes in Wellington, a demand that real estate broker Martha W. Jolicoeur is uniquely qualified to fulfill.

As the level of horse sport competition in South Florida has climbed higher and higher, so too has the need for bigger and more luxurious properties. The result is a flourishing market filled with “to-die-for” homes and farms.

Jolicoeur first made a name for herself among the equestrian community as a top amateur rider who then competed internationally. Stepping into her role in the elite Douglas Elliman Real Estate sports and entertainment division, Jolicoeur exhibits the same passion she had for competing when matching her real estate clients with the homes and farms of their dreams.

“I truly found my calling when I combined my zeal for horse sport with a talent for real estate,” said Jolicoeur, who has been a licensed agent since 1991. “I have watched Wellington explode onto the international show jumping, dressage and polo scenes, and become a hotspot for the best athletes and horses in the world. The real estate market has grown immensely alongside that, and it is an honor to be able to help members of the equestrian community find, or sell, their ideal farms and homes.”

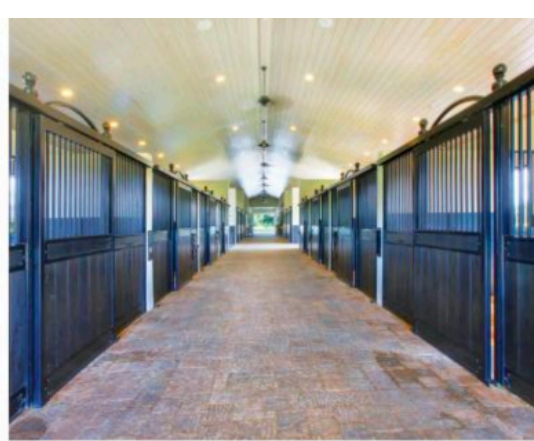
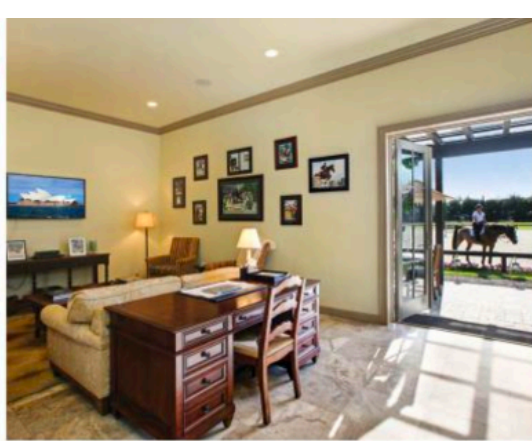
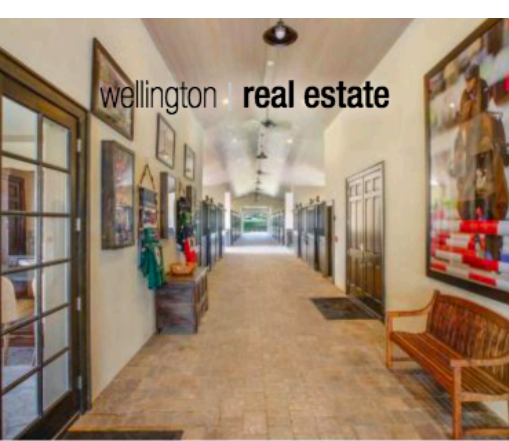
Looking for the perfect equestrian home? Take a stroll with Jolicoeur through several amazing equestrian real estate properties.

Convenience and privacy are realized in a seven-stall center-aisle barn and estate at 1761 Clydesdale Avenue. Gated within Paddock Park 2, the property is within hacking distance to all the action at the Palm Beach International Equestrian Center, yet is tucked away on a slice of equine-inspired paradise.

“This move-in ready property is perfect for any training operation,” said Jolicoeur of the custom-built barn, which features a tack room, indoor and outdoor wash stalls, as well as a feed and laundry room. “Just steps away from the barn itself is an expansive sand ring and large paddocks providing ample turn-out space.” ▶



Martha Jolicoeur has been a licensed agent since 1991.



A look at the barn and office at an amazing equestrian facility on Stables Way in Palm Beach Point East.

Turning off Clydesdale Avenue, the lavish main house with impact glass includes four bedrooms, four-and-a-half bathrooms, fireplaces throughout, and a superb gourmet kitchen with custom granite countertops and a chef's prep island.

"A divine outdoor heated pool and spa with marble pool deck and full summer kitchen make the most of a sprawling backyard," said Jolicoeur of the \$3.36 million property. "And it doesn't stop there. The estate also includes a detached one bedroom, one bathroom guest cottage with a full modern kitchen

and living area. This Clydesdale Avenue estate is perfect for anyone looking to show horses during the winter or to find a new place to call home in Wellington."

Just a short distance from Paddock Park, 15491 Palma Lane can be found inside the gates of Palm Beach Point. Step out from an immaculately appointed home onto a covered Carrera marble patio and catch a glimpse of the eight-stall center-aisle barn.

"Custom wood paneling in an open-air setting make this barn a vacation in itself," said Jolicoeur of the \$5.4 million

farm that includes a 135-foot-by-230-foot riding arena with all-weather sand textile mix footing and a surround sound system. "Adjacent to the barn are seven paddocks on 5.4 acres, creating a beautiful sight from the custom outdoor kitchen and saltwater pool."

Inside the home, an ideal blend of rustic and Mediterranean styles grace the completely updated residence. It features a split bedroom floor plan with sloped ceilings and decorative ledges that add personality to every room. The space boasts a formal dining area and eat-in kitchen, with granite coun-



ANNEXO

COFFEE & BITES

Come See What
Annexo Coffee & Bites
Is All About!

An eclectic mix of ideas, style, and taste from abroad



Best Happy Hour In Town

Annexo Coffee & Bites is the best place to eat and hang out in Wellington with the best Italian coffee & international bites in town. Excellent selection of beer and wine. Bringing the community together with Music, Art, Poetry, private events and more. Annexo has an eclectic vibe with an amazing atmosphere. We look forward to meeting you all.

Erika and Andres



10120 Forest Hill Boulevard, Suite 170, Wellington, Florida 33414
(561) 333-0287 | www.annexocoffeeandbites.com



visit us on facebook for more information www.facebook.com/annexocoffeebites



Equestrian amenities are second to none at these featured properties. (L-R) Palma Lane in Palm Beach Point, Stables Way in Palm Beach Point East and Clydesdale Avenue in Paddock Park 2.

tertops and stainless-steel appliances. In the master bedroom, a Roman tub, separate shower, dual sinks and a sitting area are stand-out attributes. "Whether hacking to a horse show or relaxing at home, this property is the perfect escape from the hustle and bustle of the competition season," Jolicoeur said.

Venturing into Palm Beach Point East, 4770 Stables Way provides another property option only a short hack from the Palm Beach International Equestrian Center.

"This incredible ten-acre farm is fit for the professional horse person," said

Jolicoeur of the 12-stall center-aisle stable. "It recently underwent a full renovation and is ready for the new season featuring the finest amenities."

The \$6.7 million property features a new tack room with granite countertops and unbeatable storage capacity, as well as a spacious owner's lounge with a full kitchen and two-and-a-half bathrooms. "Ample space for riding is available, courtesy of a large Grand Prix field and a new ring with top-grade fiber footing and an underground drainage and water system," Jolicoeur said. "The on-property tent pad holds 15 12-foot-

by-12-foot stalls, and there are nine paddocks, a large lunging ring, and covered treadmill and blacksmith areas. This pristine farm is one any horse would be happy to come home to."

Jolicoeur understands the importance of customer excellence and prides herself on dealing honestly and fairly while creating relationships with her customers that continue far beyond a transaction.

For more information about Jolicoeur, or to find out more about one for the properties featured here, visit www.marthasproperties.com. ■

OUR CARING MEDICAL TEAM IS WAITING TO SEE YOU. RIGHT NOW.

Our streamlined approach helps you be seen quickly and feel better fast. Any day of the week we will take the time to fully understand your situation and provide the care you need.

15689 Southern Blvd, Loxahatchee Groves, FL 33470
561.220.0737 | AFCUrgentCareLoxGroves.com

afc american family care URGENT CARE

NO APPOINTMENT NEEDED. OPEN M-F: 8AM TO 8PM, S-S: 8AM TO 5PM

- URGENT CARE
- X-RAY SERVICES ON-SITE
- LAB SERVICES ON-SITE
- VACCINATIONS & PHYSICALS
- OCCUPATIONAL MEDICINE
- MOST INSURANCE PLANS ACCEPTED

ROYAL PALM Auto Spa

COMPLETE AUTOMOTIVE SERVICE

Auto Repair • Brakes • Alignments
Wheels & Tires • Scheduled Maintenance

We Honor Extended Warranties

Acura • Honda • BMW • Jaguar • Lexus • Toyota • Mercedes Benz
Late Models • Foreign & Domestic

Present this ad for **\$25 OFF** any purchase of **\$100 or more**

(561) 784-7116
www.RoyalPalmAutoSpa.com
11503 Southern Blvd. Royal Palm Beach, Florida 33411